

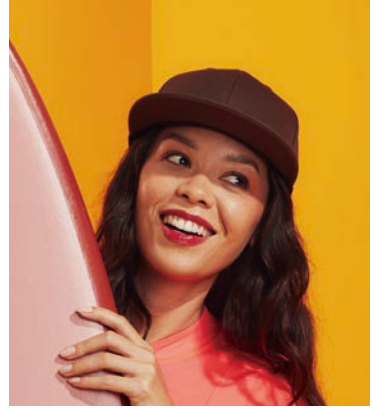
**YUPOONG**



**FLEXFIT®**

**2024 CATALOG**

**50 YEARS OF EXCELLENCE**



---

TABLE OF CONTENTS

FLEXFIT® 2024 CATALOG

---

# IN THIS ISSUE

<b>04</b>	EXPANDING TECHNOLOGY	<b>18</b>	FLEXFIT 210®
<b>06</b>	TECHNOLOGIES	<b>19</b>	YP CLASSICS®
<b>07</b>	PRODUCT GUIDE	<b>34</b>	YP CLASSICS® KNITS
<b>08</b>	PROGRAMS	<b>36</b>	JUNIOR
<b>09</b>	FLEXFIT NU®	<b>38</b>	CAMO
<b>10</b>	FLEXFIT 110®	<b>40</b>	YP CLASSICS® RECYCLED
<b>14</b>	FLEXFIT DELTA®	<b>42</b>	HAT COMPONENTS
<b>17</b>	FLEXFIT®	<b>43</b>	HAT SIZING

※販売代理店ごとに取引ルールが異なります。詳しくは販売代理店担当者へ  
ご確認をお願いします。



**FLEXFIT®**

**FLEXFIT®**

**FLEXFIT®**

## BUILT TO LAST

Since 1974, Yupoong has stood as pioneers and innovators in the realm of headwear. We began with a more formal roll-up hat and have since progressed to crafting cutting-edge performance wear. Throughout our journey, Yupoong has consistently led the way in comfort technology, as evident in the 30 years of headwear and textile innovation encapsulated in Flexfit®.



# EXPANDING TECHNOLOGY

**FLEXFIT®**

**FLEXFIT®**

**FLEXFIT®**

From the Timeless Classic adjustable trucker hats to the groundbreaking stretchy hat, Flexfit®, and now the pinnacle of headwear technology, FLEXFIT NU®, each represents Yupoong's unwavering dedication and commitment to our clients and their customers. As the world continues to evolve, Yupoong and Flexfit® are committed to remaining one step ahead in the latest advancements in comfort and performance technology. This commitment ensures a prosperous future for our clients and guarantees a new favorite hat for theirs.

## KEY TECHNOLOGIES



### FLEXFIT® TECH

FLEXFIT®キャップは、スウェットバンド及びクラウン全体にポリウレタンのスパンデックスを使用しており、その技術は絶妙な使用心地を可能とします。世界に一つのオリジナルです。



### FLEXFIT® MESH

伸縮性のあるトラックメッシュは、トラックキャップの間で優れた快適性と革新性を兼ね備えています。



### ACTIVEGUARD™

従来のフロントパネルとは対照的に、汗の染み込みがアンダーバイザーに行くように設計し、汗の吸収性を高めた革新的なデザイン。爽やかな状態を長くキープします。



### PERMACURV®

バイザーの形と曲線を常時保つ技術が使われています。

## CUSTOM TECHNOLOGIES



### FLEXIBLE VISOR

柔軟なバイザーは常にその形を保ち、軽量です。



### HYBRID TECH

YUPOONGのハイブリッド技術はクール&ドライ技術と耐水性を兼ね備えています。

## SPECIALIZED TECHNOLOGIES



### STAIN BLOCK TECH

オリジナル特許技術。3層からなる多機能スウェットバンド。汗を吸収しアンダーバイザーから吸収した汗を蒸発拡散させます。



### PRO-FORMANCE®

プロ・フォーマンス生地は、他には無い通気性に成功し、汗を外に逃がすことで乾燥した状態が持続します。



### COOL & DRY

汗を外に逃がす技術により、クールでドライな快適さを維持します。



### WATER REPELLENT

撥水機能、乾いた状態を保ちます。

6110NU

# PRODUCT GUIDE



## YP CLASSICS®

YUPOONG® スナップバック

Yupoong®スナップバックは、40年間かけて丁寧に作り上げられ、他にはない品質とフィット感、快適さのある、時代を選ばないクラシックなキャップです。その多様さが長年愛されてきた理由となっています。



## FLEXFIT

FLEXFIT®

Flexfit®キャップは、Flexfitの伸縮性スウェットバンド技術を使用した、オリジナルの伸縮性キャップです。快適さとファッション性を絶妙なバランスで兼ね備えており、スポーツ時やカジュアルウェアとしても、使う場所を選びません。



## FLEXFIT 110®

ONE TEN® FLEXFIT® (ワン・テン・フレックスフィット)

110 Flexfit®は、10のサイズにフィットするだけでなく、その中間の全てのサイズにアジャストすることができます。最先端の生地と快適さを作る技術を使って、一見クラシックなアジャストキャップに革新的なひねりを加えています。伸縮性のあるスウェットバンドと後ろをアジャスト可能にすることにより、キャップは全方面にストレッチし、ユニバーサルに対応するフィット感が生まれます。



## FLEXFIT 210®

TWO TEN FITTED® (ツー・テン・フィッテッド)

Two Ten Fitted®のネーミングは、2サイズ(S~M及びL~XL)が10サイズに対応することが由来となっています。プレミアムな伸縮性とフィット感を持ち合わせているキャップの形はプロ野球の試合で使われているものと一緒であり、フラット・バイザーです。固いバックラムを使用した3 3/4"クラウンと、汗に対応する吸水ブロスウェットバンドが特徴の210 Fitted®は、アスリート及びファッションアイテムとしても満足していただけます。



## FLEXFIT DELTA®

FLEXFIT DELTA® (フレックスフィット・デルタ)

Flexfit Delta®は軽量で、おしゃれで、スマートであり、毎日使うキャップとして、革新的な快適性と利便性を持ち合わせています。シームレスな構成で作られたキャップは縫い目を最小限に抑え、3つのレイヤーから作られたマルチ機能なスウェットバンドは、吸汗・汗染み防止、速乾効果があります。キャップの内側で使用されているFlexfit®ボンド・テーピングは、防臭・防菌・湿度調整加工となっています。



## FLEXFIT NU®

FLEXFIT NU® (フレックスフィット・エヌユー)

Flexfit NU®は独自のトライレイヤーを備えたFlexfit®。キャップテクニックと最小限のステッチ技術、テクニカルテーピングを使用しカスタマイズしやすいフロントパネルを実現。さらにクール&ドライ機能も兼ね備えています。アクティブガードテクノロジーを可能にします。汗と湿気から守り、最高の快適性を実現します。

# PROGRAMS



## CUSTOM DOMESTIC PROGRAM

With considerably shorter lead times and lower minimums, the Custom Domestic program will meet your exact specifications with the finest craftsmanship and prompt service.

<b>MINIMUMS</b>	New Orders: 12 DZ (144 pcs) per logo Re-Orders: 4 DZ (48 pcs) per logo and per SKU
<b>REQUEST A QUOTE</b>	Price will be quoted based on design. Sample Cost: \$20.00 each + Digitizing fee
<b>LEAD TIMES</b>	Prototype Sample: 1 week Bulk Production: 3-4 weeks <i>Lead times are subject to change</i>
<b>CONTACT</b>	domesticsales@flexfit.com <i>Please specify your location for a prompt response</i>



## CUSTOM OVERSEAS PROGRAM

Custom Overseas program will help bring your designs to life. With hundreds of options to choose from, you can create a one-of-a-kind cap that suits your needs.

<b>MINIMUMS</b>	60 DZ (720 pcs) per style
<b>REQUEST A QUOTE</b>	Price will be quoted based on design.
<b>LEAD TIMES</b>	Prototype Sample: 2-3 weeks Salesman Sample: 3-4 weeks Bulk Production: 8-12 weeks <i>Lead times are subject to change</i>
<b>CONTACT</b>	customsales@flexfit.com <i>Please specify your location for a prompt response</i>



## BLANK PROGRAM

We offer hundreds of styles in different fabrics, shapes, sizes and colors for all your customization needs. Our blank caps boast the highest quality that no other manufacturers dare to meet.

<b>MINIMUMS</b>	1 DZ (12 pcs) per SKU
<b>REQUEST A QUOTE</b>	Refer to most updated price list <i>*Prices subject to change</i>
<b>LEAD TIMES</b>	If you have an active account with us, caps can be purchased immediately through our Webshop or by contacting our offices.
<b>CONTACT</b>	blanksales@flexfit.com <i>Please specify your location for a prompt response</i>



## WEBSHOP

Flexfit® Webshop is a convenient way to purchase our caps. You will be able to browse through hundreds of different blank caps and purchase them with a click of a button.

<b>HOW TO USE WEBSHOP</b>	1. Register at <a href="https://shop.flexfit.com">https://shop.flexfit.com</a> 2. Verify your state seller's permit. 3. Shop away!
<b>VISIT OUR WEBSHOP</b>	<a href="https://shop.flexfit.com">shop.flexfit.com</a>





6110NU

# FLEXFIT NU®

## TECH OVERVIEW



Flexfit NU® caps serve as a seamless foundation for your designs. Embellishments now go on flatter, smoother, and more efficiently with seam-sealed technical taping and non-stitching technology. Tested at over 1,000 RPMs Flexfit NU® Technology enhances your productivity and impact, by design. Featuring ActiveGuard™ Technology, Enabling the sweatband to swiftly absorb and redirect sweat and moisture to the undersvisor, facilitating rapid evaporation for a completely revolutionized comfort experience.

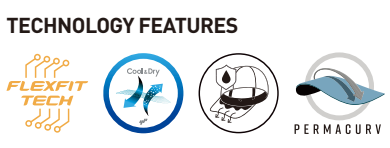


6110NU **NEW**

## FLEXFIT NU® ADJUSTABLE CAP

The Flexfit NU® Adjustable Cap combines the original Flexfit® Tech, enhanced Cool & Dry technology, and ActiveGuard™ technology to embody refinement and modern comfortability with an iconic foundation. Integrating personalized fit with an adjustable back that fits up to ten sizes, the Flexfit NU® Adjustable Cap is reimagined as an all-around player for the new premium everyday headwear. 6-panel structured cap with matching undervisor. Matching plastic snapback closure and 8-rows of stitching on visor. Embroidered with the 4BAR logo to assure the quality of our renowned craftsmanship. Reimagined Adjustable + Flexfit® Technology.

<b>CONTENTS</b> 79% Polyester / 18% Rayon / 3% PU Spandex	<b>PROFILE</b> Mid	<b>PANELS</b> 6
<b>SIZE</b> OSFA	<b>VISOR</b> Permacurv	<b>CROWN</b> 3 1/2"



110F



# MADE FOR: PEOPLE

110MT



## FLEXFIT 110®

110M

110MT

110F

110FT

110C

110P

8110

### TECH OVERVIEW



FLEXFIT® TECH



ADJUSTABLE CLOSURE

Flexfit 110® cap infuses Flexfit® Technology to provide a further tailored experience in size and fit. One product that covers 10 sizes, Flexfit 110® cap is your ultimate headwear solution. Through the combination of Flexfit® Technology and adjustable closures, the Flexfit 110® cap is the ultimate one-size-fits-more.



SNAPBACK



BLACK

CHARCOAL

NAVY

RED

WHITE

110M

## FLEXFIT 110® MESH CAP

Mesh cap for ultimate comfort and ventilation. 6-panel structured cap with silver undervisor. Matching plastic snapback closure with 8 rows of stitching on visor. Adjustable + Flexfit® Technology.

**CONTENTS**  
74% Polyester / 26% Cotton

**PROFILE**  
Mid

**PANELS**  
6

**SIZE**  
OSFA

**VISOR**  
Permacurv

**CROWN**  
3 1/2"

### TECHNOLOGY FEATURES



SNAPBACK



BLACK/  
WHITE

CARMEL/  
KHAKI

CHARCOAL/  
BLACK

NAVY/WHITE

RED/WHITE

ROYAL/WHITE

110MT

## FLEXFIT 110® MESH CAP - 2-TONE

Mesh cap for ultimate comfort and ventilation. 6-panel structured cap with silver undervisor. Matching plastic snapback closure with 8 rows of stitching on visor. Comes in 2-Tone. Adjustable + Flexfit® Technology.

**CONTENTS**  
74% Polyester / 26% Cotton

**PROFILE**  
Mid

**PANELS**  
6

**SIZE**  
OSFA

**VISOR**  
Permacurv

**CROWN**  
3 1/2"

### TECHNOLOGY FEATURES



SNAPBACK



BLACK

DARK GREY

DARK NAVY NEW

HEATHER GREY

MAROON

NAVY

RED

ROYAL

WHITE

110F

## FLEXFIT 110® PREMIUM SNAPBACK CAP

Premium wool-blended cap with moisture-absorbent elastic sweatband. 6-panel structured cap with matching undervisor. Snapback closure with 8 rows of stitching on visor. Adjustable + Flexfit® Technology.

**CONTENTS**  
83% Acrylic / 15% Wool /  
2% PU Spandex  
White : 98% Acrylic /  
2% PU Spandex

**PROFILE**  
High

**PANELS**  
6

**SIZE**  
OSFA

**VISOR**  
Flat

**CROWN**  
3 3/4"

### TECHNOLOGY FEATURES





SNAPBACK

110FT

## FLEXFIT 110® PREMIUM SNAPBACK CAP-2-TONE

Premium wool-blended cap with moisture-absorbent elastic sweatband. 6-panel structured cap with matching undervisor. Snapback closure with 8 rows of stitching on visor. Comes in 2-Tone. Adjustable + Flexfit® Technology.

### CONTENTS

83% Acrylic / 15% Wool / 2% PU Spandex

### SIZE

OSFA

### PROFILE

High

### PANELS

6

### VISOR

Flat

### CROWN

3 3/4"

### TECHNOLOGY FEATURES



110F



HOOK & LOOP



110C

## FLEXFIT 110® PRO-FORMANCE CAP

Moisture-wicking cap with performance sweatband. 6-panel structured cap with matching undervisor. Matching Hook & Loop closure with 8 rows of stitching on visor. Adjustable + Flexfit® Technology.

<b>CONTENTS</b> 97% Polyester / 3% PU Spandex	<b>PROFILE</b> Mid	<b>PANELS</b> 6
<b>SIZE</b> OSFA	<b>VISOR</b> Permacurv	<b>CROWN</b> 3 1/2"

TECHNOLOGY FEATURES



D-RING HOOK & LOOP



110P

## FLEXFIT 110® COOL&DRY MINI PIQUE CAP

Lightweight cap with moisture-wicking and water repellent abilities. 6-panel structured cap with matching undervisor. D-ring hook and loop closure with 8 rows of stitching on visor. Adjustable + Flexfit® Technology.

<b>CONTENTS</b> 100% Polyester	<b>PROFILE</b> Mid	<b>PANELS</b> 6
<b>SIZE</b> OSFA	<b>VISOR</b> Permacurv	<b>CROWN</b> 3 1/2"

TECHNOLOGY FEATURES



D-RING HOOK & LOOP



8110

## FLEXFIT 110® VISOR

Mini pique, Cool & Dry fabric. Elastic flexloop attached to hook & loop closure for unparalleled comfort. 6 rows of stitching on visor. Matching undervisor. Adjustable + Flexfit® Technology.

<b>CONTENTS</b> 97% Polyester / 3% PU Spandex	<b>PROFILE</b> Low	<b>PANELS</b> N/A
<b>SIZE</b> OSFA	<b>VISOR</b> Permacurv	<b>CROWN</b> 2 1/2"

TECHNOLOGY FEATURES



180

# MADE FOR: PERFORMANCE



## FLEXFIT DELTA®

- 180
- 180A
- 180A-RVDDW
- 180FV
- 180FV-RVDDW

### TECH OVERVIEW



FLEXFIT® BONDING

Flexfit Delta® cap embodies a fusion of advanced technologies, designed to enhance the wearing experience both internally and externally. It incorporates Stain Blocking Technology, aided by ActiveGuard™ Technology and its three-layer multifunctional sweatband, effectively countering unwanted staining, keeping you feeling and looking good inside and out. Complementing its streamlined design, this cap is further equipped with Water Repellent Technology. Flexfit Delta® stands as dependable headwear meticulously crafted to ensure your utmost comfort.



STITCHLESS PANELING



STRETCH-FITTED



BLACK DARK GREY



MAROON NAVY



OLIVE RED



ROYAL SILVER



SPRUCE WHITE

180

## FLEXFIT DELTA® CAP

Lighter, sleeker, and smarter, Flexfit Delta® cap maintains its sweat-free status with the patented Stain-Block Technology and the 3-layer sweatband while offering a sleek appearance with the seamless bonding finish. 6-panel structured with black undervisor. White: White undervisor.

**CONTENTS**  
92% Polyester / 8% PU Spandex

**PROFILE**  
Mid **PANELS**  
6

**SIZE**  
S/M, L/XL

**VISOR**  
Permacurv **CROWN**  
3 1/2"

### TECHNOLOGY FEATURES



BLACK NAVY



WHITE SPRUCE



DARK GREY

180A

## FLEXFIT DELTA® ADJUSTABLE CAP

Flexfit Delta® is a revolutionary cap that is the lighter, sleeker, smarter and more comfortable choice. It fuses panels with a seamless, stitch-free finish and it couples a lightweight visor fabrication with a new 3-Layer multifunction sweatband. There's even patent-pending stain block tech that prevents sweat staining on the cap's crown. New lightweight, hard buckram.

**CONTENTS**  
92% Polyester / 8% PU Spandex

**PROFILE**  
Mid **PANELS**  
6

**SIZE**  
OSFA

**VISOR**  
Permacurv **CROWN**  
3 1/2"

### TECHNOLOGY FEATURES



SNAPBACK



BLACK

180A-RVDDW

## FLEXFIT DELTA® SNAPBACK CAP

Flexfit Delta® is a revolutionary cap that is the lighter, sleeker, smarter and more comfortable choice. It fuses panels with a seamless, stitch-free finish and it couples a lightweight visor fabrication with a new 3-Layer multifunction sweatband. There's even patent-pending stain block tech that prevents sweat staining on the cap's crown. New lightweight, hard buckram.

**CONTENTS**  
92% Polyester / 8% PU Spandex

**PROFILE**  
Mid **PANELS**  
6

**SIZE**  
OSFA

**VISOR**  
Permacurv **CROWN**  
3 1/2"

### TECHNOLOGY FEATURES





STRETCHFITTED



SNAPBACK



BLACK

180FV

## FLEXFIT DELTA® FLAT VISOR CAP

Flexfit Delta® is a revolutionary cap that is the lighter, sleeker, smarter and more comfortable choice. It fuses panels with a seamless, stitch-free finish and it couples a lightweight visor fabrication with a new 3-Layer multifunction sweatband. There's even patent-pending stain block tech that prevents sweat staining on the cap's crown. New lightweight, hard buckram.

**CONTENTS**  
92% Polyester / 8% PU Spandex

**PROFILE**  
Mid

**PANELS**  
6

**SIZE**  
S/M, L/XL

**VISOR**  
Flat

**CROWN**  
3 1/2"

### TECHNOLOGY FEATURES



180FV-RVDDW

## FLEXFIT DELTA® FLAT VISOR SNAPBACK CAP

Flexfit Delta® is a revolutionary cap that is the lighter, sleeker, smarter and more comfortable choice. It fuses panels with a seamless, stitch-free finish and it couples a lightweight visor fabrication with a new 3-Layer multifunction sweatband. There's even patent-pending stain block tech that prevents sweat staining on the cap's crown. New lightweight, hard buckram.

**CONTENTS**  
92% Polyester / 8% PU Spandex

**PROFILE**  
Mid

**PANELS**  
6

**SIZE**  
OSFA

**VISOR**  
Flat

**CROWN**  
3 1/2"

### TECHNOLOGY FEATURES







# FLEXFIT®

6277

## TECH OVERVIEW



Our journey has been one of continual evolution, building upon the foundations of the past while propelling innovation toward the future. At the heart of our success lies the original Flexfit® Technology, an engineering marvel that seamlessly integrates polyurethane spandex into the very fabric of our core product brands. This innovation, serving as the foundation of comfort and flexibility, is a testament to our unwavering dedication to providing the finest fit for all enthusiasts of headwear. Flexfit® continues to meet tradition with advancements for the ultimate quality, comfort, and style.



FLEXFIT-TECH



FLEXFIT-MESH

# MADE FOR: COMFORT

6277

## FLEXFIT® WOOLY COMBED CAP

All-time best seller baseball cap. 6-panel structured cap with silver undersvisor. Flexfit® fitted cap for style and comfort. 8 rows of stitching on visor. FLEXFIT THE ONE AND ONLY ORIGINAL®.

### CONTENTS

63% Polyester / 34% Cotton / 3% PU Spandex

### SIZE

S/M, L/XL

### PROFILE

Mid

### PANELS

6

### VISOR

Permacurv

### CROWN

3 1/2"

### TECHNOLOGY FEATURES



6277XX

### SIZE

XXL



BLACK



DARK GREY



NAVY



DARK NAVY



STRETCH-FITTED



BLACK



DARK GREY



NAVY



DARK NAVY



RED



ROYAL



BROWN



CAROLINA BLUE



COYOTE BROWN



GOLD



GREY



KHAKI



MAROON



OLIVE



ORANGE



PEPPER GREEN



PINK



PURPLE



SILVER



SPRUCE



STONE



WHITE

# MADE FOR: QUALITY

6210



## FLEXFIT 210®

### TECH OVERVIEW



Flexfit 210® is crafted with premium materials and cutting-edge technology for a comfortable fit wherever you go. From demanding tasks to thrilling adventures, our hat is built to compliment it all. Made from durable materials and expert craftsmanship, Flexfit 210® is a dependable choice throughout your life and style.



BLACK

DARK NAVY



HEATHER GREY



STRETCH-FITTED

6210

## FLEXFIT 210® PREMIUM FITTED CAP

The signature Flexfit® comfort with an elevated premium finish – immerse yourself in the comfort technology of the Original Flexfit in Flexfit 210®, now seamlessly paired with a style adaptable to any lifestyle. Pro-shape premium wool blend 6-panel structured cap with 9 rows of stitching and a matching undervisor finish.

**CONTENTS**  
83% Acrylic / 15% Wool /  
2% PU Spandex

**SIZE**  
S/M, L/XL, XXL

**PROFILE**  
High

**PANELS**  
6

**VISOR**  
Flat

**CROWN**  
3 3/4"

### TECHNOLOGY FEATURES



# YP CLASSICS®

## TECH OVERVIEW



Established in 1974, the YP Classics® caps have stood the test of time and has become a pillar of timeless and authentic headwear. Over the course of five decades, YP Classics® has continuously expanded its range and variety, all while steadfastly upholding uncompromising quality standards. This evolution empowers wearers with the freedom to select what genuinely resonates with their unique lifestyle and personal style.



6606T



PERMACURV®



TIMELESS CLASSICS

# MADE FOR: EVERYDAY

# YP CLASSICS®



SNAPBACK



BLACK

CARAMEL



CHARCOAL

CRANBERRY



DARKHEATHER GREY

EVERGREEN



KHAKI

NAVY



PINK

RED



SILVER

WHITE

6606

## YP CLASSICS® RETRO TRUCKER CAP

Best selling trucker cap with premium mesh panels for breathability. 6-panel structured trucker with matching undervisor (black undervisor for Camo). Matching snapback (white snapback for pink, black snapback for Camo) with 8 rows of stitching on visor. Comes in 2-Tone, White front panels, and Camo pattern. Esteemed since 1974.

**CONTENTS**  
65% Polyester / 35% Cotton

**PROFILE**  
Mid

**PANELS**  
6

**SIZE**  
OSFA

**VISOR**  
Permacury

**CROWN**  
31/2"

### TECHNOLOGY FEATURES



PERMACURY



SNAPBACK



BLACK/  
WHITE

BROWN/  
KHAKI



CHARCOAL/  
BLACK

NAVY/WHITE



ROYAL/WHITE

HEATHER/  
BLACK



EVERGREEN/  
WHITE

6606T

## YP CLASSICS® RETRO TRUCKER CAP

Best selling trucker cap with premium mesh panels for breathability. 6-panel structured trucker with matching undervisor (black undervisor for Camo). Matching snapback (white snapback for pink, black snapback for Camo) with 8 rows of stitching on visor. Comes in 2-Tone, White front panels, and Camo pattern. Esteemed since 1974.

**CONTENTS**  
65% Polyester / 35% Cotton

**PROFILE**  
Mid

**PANELS**  
6

**SIZE**  
OSFA

**VISOR**  
Permacurv

**CROWN**  
3 1/2"

### TECHNOLOGY FEATURES



PERMACURV



SNAPBACK



GREEN  
CAMO/BLACK

6606CA

## YP CLASSICS® RETRO TRUCKER CAP

Best selling trucker cap with premium mesh panels for breathability. 6-panel structured trucker with matching undervisor (black undervisor for Camo). Matching snapback (white snapback for pink, black snapback for Camo) with 8 rows of stitching on visor. Comes in 2-Tone, White front panels, and Camo pattern. Esteemed since 1974.

**CONTENTS**  
85% Polyester / 15% Cotton

**PROFILE**  
Mid

**PANELS**  
6

**SIZE**  
OSFA

**VISOR**  
Permacurv

**CROWN**  
3 1/2"

### TECHNOLOGY FEATURES



PERMACURV



SNAPBACK



BLACK/  
WHITE/BLACK

NAVY/  
WHITE/NAVY

6606W

## YP CLASSICS® RETRO TRUCKER CAP

Best selling trucker cap with premium mesh panels for breathability. 6-panel structured trucker with matching undervisor (black undervisor for Camo). Matching snapback (white snapback for pink, black snapback for Camo) with 8 rows of stitching on visor. Comes in 2-Tone, White front panels, and Camo pattern. Esteemed since 1974.

**CONTENTS**  
65% Polyester / 35% Cotton

**PROFILE**  
Mid

**PANELS**  
6

**SIZE**  
OSFA

**VISOR**  
Permacurv

**CROWN**  
3 1/2"

### TECHNOLOGY FEATURES



PERMACURV



SNAPBACK



6006

## YP CLASSICS® CLASSIC TRUCKER CAP

Classic trucker look with premium mesh panels. One front panel is ideal for screenprinting. 5-panel structured cap with matching undervisor. Matching snapback (white plastic snap for pink) with 8 rows of stitching on visor. Available in 2-Tone and White Front Panels. Esteemed since 1974.

**CONTENTS**  
65% Polyester / 35% Cotton

**PROFILE**  
High

**PANELS**  
5

**SIZE**  
OSFA

**VISOR**  
Flat

**CROWN**  
4"



SNAPBACK



6006T

## YP CLASSICS® CLASSIC TRUCKER CAP

Classic trucker look with premium mesh panels. One front panel is ideal for screenprinting. 5-panel structured cap with matching undervisor. Matching snapback (white plastic snap for pink) with 8 rows of stitching on visor. Available in 2-Tone and White Front Panels. Esteemed since 1974.

**CONTENTS**  
65% Polyester / 35% Cotton

**PROFILE**  
High

**PANELS**  
5

**SIZE**  
OSFA

**VISOR**  
Flat

**CROWN**  
4"



SNAPBACK



6006CA

NEW

## YYP CLASSICS® CLASSIC TRUCKER CAP

Classic trucker look with premium mesh panels. One front panel is ideal for screenprinting. 5-panel structured cap with matching undervisor. Matching snapback (white plastic snap for pink) with 8 rows of stitching on visor. Available in 2-Tone and White Front Panels. Esteemed since 1974.

**CONTENTS**  
85% Polyester / 15% Cotton

**PROFILE**  
High

**PANELS**  
5

**SIZE**  
OSFA

**VISOR**  
Flat

**CROWN**  
4"

6006T





SNAPBACK



BLACK CHARCOAL



NAVY NEONORANGE



NEON YELLOW RED



WHITE

6360

## YP CLASSICS® 360 OMNIMESH CAP

Snapback cap with all-around mesh for breathability. 6-panel unstructured cap with silver undervisor and matching plastic snapback closure. 8 rows of stitching on visor. Esteemed since 1974.

**CONTENTS**  
87% Polyester / 13% Cotton

**PROFILE**  
Mid

**PANELS**  
6

**SIZE**  
OSFA

**VISOR**  
Permacurv

**CROWN**  
31/2"

### TECHNOLOGY FEATURES



PERMACURV



SNAPBACK



BLACK HEATHERGREY



NAVY RED



MAROON

5789M

## YP CLASSICS® 5-PANEL PREMIUM CURVED VISOR SNAPBACK CAP

Seamless front panel, premium cap with wool-blended fabric that allows for better decoration. 5-panel structured cap with matching undervisor. Matching plastic snapback closure with 8 rows of stitching on visor. Esteemed since 1974.

**CONTENTS**  
80% Acrylic / 20% Wool

**PROFILE**  
Mid

**PANELS**  
5

**SIZE**  
OSFA

**VISOR**  
Permacurv

**CROWN**  
31/2"

### TECHNOLOGY FEATURES



PERMACURV



SNAPBACK



BLACK DARKGREY



HEATHERGREY MAROON



NAVY RED



ROYAL WHITE

6789M

## YP CLASSICS® PREMIUM CURVED VISOR SNAPBACK CAP

Premium wool-blended curved visor snapback. 6-panel structured cap with matching undervisor. Matching plastic snapback closure with 8 rows for stitching on visor. Esteemed since 1974.

**CONTENTS**  
80% Acrylic / 20% Wool  
White : 100% Acrylic

**PROFILE**  
Mid

**PANELS**  
6

**SIZE**  
OSFA

**VISOR**  
Permacurv

**CROWN**  
31/2"

### TECHNOLOGY FEATURES



PERMACURV



6089M

## YP CLASSICS® PREMIUM SNAPBACK CAP

Premium wool-blended snapback for luxurious look. 6-panel structured cap with classic green undervisor. Matching plastic snapback closure with 8 rows of stitching on visor. Esteemed since 1974.

**CONTENTS**  
80% Acrylic / 20% Wool  
White : 100% Acrylic  
**SIZE**  
OSFA

**PROFILE**  
High  
**PANELS**  
6

**VISOR**  
Flat  
**CROWN**  
3 3/4"



6089MT

## YP CLASSICS® PREMIUM SNAPBACK CAP - 2-TONE

Premium wool-blended snapback for luxurious look. 6-panel structured cap with classic green undervisor. Contrasting plastic snapback closure, eyelets and top button with 8 rows of stitching on visor. Comes in 2-Tone. Esteemed since 1974.

**CONTENTS**  
80% Acrylic / 20% Wool  
**SIZE**  
OSFA

**PROFILE**  
High  
**PANELS**  
6

**VISOR**  
Flat  
**CROWN**  
3 3/4"





GREENCAMO



SNAPBACK

6089CM

## YP CLASSICS® PREMIUM SNAPBACK CAMO CAP

Premium snapback in high quality Woodland Camo pattern. 6-panel structured cap with green undervisor. Black plastic snapback closure with 8 rows of stitching on visor. Esteemed since 1974.

**CONTENTS**  
65% Acrylic / 35% Wool

**PROFILE**  
High

**PANELS**  
6

**SIZE**  
OSFA

**VISOR**  
Flat

**CROWN**  
33/4"



BLACK/  
CAMO



CAMO/  
BLACK



SNAPBACK

6089TC

## YP CLASSICS® PREMIUM SNAPBACK CAMO CAP - 2-TONE

Premium wool-blended snapback in Woodland Camo pattern. 6-panel structured cap with black undervisor. Black plastic snap with 8 rows of stitching on visor. Comes in 2-Tone Camo. Esteemed since 1974.

**CONTENTS**  
Black/Camo : 64% Acrylic / 16% Wool / 13% Polyester / 7% Cotton  
Camo/Black : 52% Polyester / 28% Cotton / 16% Acrylic / 4% Wool

**PROFILE**  
High

**PANELS**  
6

**SIZE**  
OSFA

**VISOR**  
Flat

**CROWN**  
33/4"



BLACK



DARK GREY



HEATHER GREY



NAVY



RED



ROYAL



SNAPBACK



WHITE

5089M

## YP CLASSICS® PREMIUM 5-PANEL SNAPBACK CAP

Premium wool-blended snapback for luxurious look. 5-panel structured cap with classic green undervisor. Matching plastic snapback closure with 8 rows of stitching on visor. Esteemed since 1974.

**CONTENTS**  
80% Acrylic / 20% Wool  
White 100% Acrylic

**PROFILE**  
High

**PANELS**  
5

**SIZE**  
OSFA

**VISOR**  
Flat

**CROWN**  
33/4"

6245CM

# YP CLASSICS® CLASSIC DAD CAP

Trendy low-profile dad cap style. 6-panel unstructured cap with matching undervisor. Classic antique brass buckle closure for style and comfort. 4 rows of stitching on visor. Esteemed since 1974.

### CONTENTS

100% Cotton  
Green Camo : 65% Polyester /  
35% Cotton

### PROFILE

Low

### PANELS

6

### SIZE

OSFA

### VISOR

Permacurv

### CROWN

31/8"

### TECHNOLOGY FEATURES



PERMACURV





BLACK

NAVY

KHAKI



ANTIQUBRASS  
BUCKLE

6245FV

## YP CLASSICS® CLASSIC FLAT VISOR DAD CAP

Flat Visor. Extra low profile. Antique brass buckle closure. Matching undervisor. Unstructured for classic, elegant style.

<b>CONTENTS</b> 100% Cotton	<b>PROFILE</b> Low	<b>PANELS</b> 6
<b>SIZE</b> OSFA	<b>VISOR</b> Flat	<b>CROWN</b> 3 1/8"



BLACK

DIAMONDBLUE

LODLEN

WHITE

LIGHT GREY

MAROON

YELLOW



ANTIQUBRASS  
BUCKLE

6245PT

## YP CLASSICS® PEACHED COTTON TWILL DAD CAP

Classic low-profile dad cap style in peached twill fabric. 6-panel unstructured cap with matching undervisor. Classic antique brass buckle closure for style and comfort. 4 rows of stitching on visor. Esteemed since 1974.

<b>CONTENTS</b> 100% Cotton	<b>PROFILE</b> Low	<b>PANELS</b> 6
<b>SIZE</b> OSFA	<b>VISOR</b> Permacurv	<b>CROWN</b> 3 1/8"

### TECHNOLOGY FEATURES



PERMACURV



BLACK

NAVY

CREAM



PLASTICHOOK

6245WP-JPLT

## YP CLASSICS® FOLD WEB DAD CAP

Japan Limited Style. Water Repellent. Extra low profile. Flexible Visore.Black clip closure.

<b>CONTENTS</b> 85% Cotton / 15% Nylon	<b>PROFILE</b> Low	<b>PANELS</b> 6
<b>SIZE</b> OSFA	<b>VISOR</b> Flexible Flat	<b>CROWN</b> 3 1/8"

### TECHNOLOGY FEATURES





PLASTICHOOK

6245DM-JPLT

## YP CLASSICS® DENIM DAD CAP

Japan Limited Style Dad shape in Denim fabric Black clip closure

**CONTENTS**  
100% Cotton

**PROFILE**  
Low

**PANELS**  
6

**SIZE**  
OSFA

**VISOR**  
Permacurv

**CROWN**  
31/8"

### TECHNOLOGY FEATURES



PERMACURV



SNAPBACK

6007

## YP CLASSICS® 5-PANEL COTTON TWILL SNAPBACK CAP

Classic snapback shape with large front panel ideal for screenprinting. 5-panel structured cap with green undervisor. Matching snapback with 8 rows of stitching on visor. Esteemed since 1974.

**CONTENTS**  
100% Cotton

**PROFILE**  
High

**PANELS**  
5

**SIZE**  
OSFA

**VISOR**  
Flat

**CROWN**  
33/4"



SNAPBACK

6007T

## YP CLASSICS® 5-PANEL COTTON TWILL SNAPBACK CAP - 2-TONE

Classic snapback shape with large front panel ideal for screenprinting. 5-panel structured cap with green undervisor. Contrasting snapback with 8 rows of stitching on visor. Comes in 2-Tone. Esteemed since 1974.

**CONTENTS**  
100% Cotton

**PROFILE**  
High

**PANELS**  
5

**SIZE**  
OSFA

**VISOR**  
Flat

**CROWN**  
33/4"



HOOK & LOOP



BLACK

DARK GREY



KHAKI

NAVY



PUTTY

RED



ROYAL

SPRUCE



WHITE



PLASTIC HOOK



BLACK

GREY



KHAKI

NAVY



OLIVE

RED



HEATHER GREY

MAROON



TIGER CAMO



PLASTIC HOOK



BLACK

KHAKI



NAVY

OLIVE



WHITE

6363V

## YP CLASSICS® BRUSHED COTTON TWILL MID PROFILE CAP

Medium buckram, adjustable cap with soft, brushed cotton fabric. 6-panel cap with matching undervisor. Matching hook & loop closure with 8-row stitching on visor. Esteemed since 1974.

**CONTENTS**  
100% Cotton

**PROFILE**  
Mid

**PANELS**  
6

**SIZE**  
OSFA

**VISOR**  
Permacurv

**CROWN**  
3 1/2"

### TECHNOLOGY FEATURES



PERMACURV

7005

## YP CLASSICS® JOCKEY CAP

Classic camper shape. Unstructured, 5-panel cap with matching undervisor. Black clip closure with 8-row stitching on visor and 4 black metal eyelets. Esteemed since 1974.

**CONTENTS**  
100% Cotton

**PROFILE**  
Low

**PANELS**  
5

**SIZE**  
OSFA

**VISOR**  
Flat

**CROWN**  
2 3/4"

7005MS-JPLT

## YP CLASSICS® JOCKEY MESH CAP

Fine tune your sporty look with the camper shape Jockey cap. Classic camper shape. Black clip closure. 4 black, metal eyelets. Soft buckram. Matching undervisor.

**CONTENTS**  
Front Visor : 100% Cotton /  
Mesh : 100% Polyester

**PROFILE**  
Low

**PANELS**  
5

**SIZE**  
OSFA

**VISOR**  
Flexible Flat

**CROWN**  
2 3/4"

### TECHNOLOGY FEATURES



7005WP-JPLT

## YP CLASSICS® FOLD WEB JOCKEY CAP

Japan Limited Style. Water Repellent. Classic camper shape. Flexible Visore.Black clip closure.

**CONTENTS**  
70% Cotton / 30% Nylon

**PROFILE**  
Low

**PANELS**  
5

**SIZE**  
OSFA

**VISOR**  
Flexible Flat

**CROWN**  
2 3/4"

### TECHNOLOGY FEATURES



PLASTICHOOK



7005MT-JPLT

## YP CLASSICS® MELTON WOOL JOCKEY CAP

Japan Limited Style Classic camper shape in melton wool fabric Flexible Visor Black clip closure.

**CONTENTS**  
50% Wool / 50% Polyester

**PROFILE**  
Low

**PANELS**  
5

**SIZE**  
OSFA

**VISOR**  
Flexible Flat

**CROWN**  
2 3/4"

### TECHNOLOGY FEATURES



PLASTICHOOK



7005DM-JPLT

## YP CLASSICS® DENIM JOCKEY CAP

Japan Limited Style Classic camper shape in Denim fabric Flexible Visor Black clip closure

**CONTENTS**  
100% Cotton

**PROFILE**  
Low

**PANELS**  
5

**SIZE**  
OSFA

**VISOR**  
Flexible Flat

**CROWN**  
2 3/4"

### TECHNOLOGY FEATURES



PLASTICHOOK



7005MA1-JPLT

## YP CLASSICS® MA-1 JOCKEY CAP

Classic camper shape. Black clip closure. 4 black metal eyelets. Soft buckram. Matching undervisor. 8 rows of stitching on visor. MA1 fabric

### CONTENTS

100% Nylon

### PROFILE

Low

### PANELS

5

### SIZE

OSFA

### VISOR

Flexible Flat

### CROWN

2 3/4"

### TECHNOLOGY FEATURES



PLASTICHOOK

7005RC

## YP CLASSICS® REFLECTOR JOCKEY CAP

Reflective. Classic camper shape. Unstructured, 5-panel cap with matching undervisor. Black clip closure with 8-row stitching on visor and 4 black metal eyelets. Esteemed since 1974.

### CONTENTS

表 : 100% Glass Beads /  
裏 : 65% Polyester, 35% Cotton

### PROFILE

Low

### PANELS

5

### SIZE

OSFA

### VISOR

Flat

### CROWN

2 3/4"



PLASTICHOOK

6502

## YP CLASSICS® UNSTRUCTURED 5-PANEL SNAPBACK CAP

Classic shape. Lightly structured. Matching undervisor and plastic snapback closure. 4 rows of stitching on visor. Esteemed since 1974.

### CONTENTS

60% Cotton / 40% Polyester

### PROFILE

High

### PANELS

5

### SIZE

OSFA

### VISOR

Flat

### CROWN

3 1/4"



SNAPBACK





SNAPBACK



6002

## YP CLASSICS® CLASSIC POPLIN GOLF CAP

Classic golf cap with 1/5" thick braid on visor. Lightly structured, 5-panel cap with matching undervisor. Matching plastic snapback closure with 4-row stitching on visor. Esteemed since 1974.

**CONTENTS**  
60% Cotton / 40% Polyester

**PROFILE**  
High

**PANELS**  
5

**SIZE**  
OSFA

**VISOR**  
Flat

**CROWN**  
4"



SNAPBACK



6005FC

## YP CLASSICS® CURVED VISOR FOME TRUCKER CAP

High quality foam trucker cap ideal for screenprinting. 5-panel cap with matching undervisor. Matching snapback with 8 rows of stitching on visor. Esteemed since 1974.

**CONTENTS**  
100% Polyester

**PROFILE**  
High

**PANELS**  
5

**SIZE**  
OSFA

**VISOR**  
Permacurv

**CROWN**  
3 3/4"

### TECHNOLOGY FEATURES



PERMACURV



1501KC

# YP CLASSICS® KNITS



1500KC

## YP CLASSICS® KNIT BEANIE

Classic knit beanie with dense weaving for easy embroidery. Esteemed since 1974.

**CONTENTS**  
100% Hypoallergenic Acrylic

**PROFILE**  
Approx. 8 1/2"

**SIZE**  
OSFA



1501P

## YP CLASSICS® CUFFED POM POM KNIT BEANIE

Super dense knit for easy embroidery. Hand washable. Uncuffed length approx. 12"

**CONTENTS**  
100% Hypoallergenic Acrylic

**PROFILE**  
Approx. 12" Uncuffed

**SIZE**  
OSFA



1501KC

## YP CLASSICS® CUFFED KNIT BEANIE

Cuffed-style beanie with dense weaving for easy embroidery. Esteemed since 1974.

**CONTENTS**  
100% Hypoallergenic Acrylic

**PROFILE**  
Approx. 12" Uncuffed

**SIZE**  
OSFA



1545K

## YP CLASSICS® RIBBED CUFFED KNIT BEANIE

Ribbed cuff knit beanie that is loosely knit. Hand washable. Uncuffed length 10"

**CONTENTS**  
100% Hypoallergenic Acrylic

**PROFILE**  
Approx. 10" Uncuffed

**SIZE**  
OSFA



SNAPBACK

6089M-Jr.

## YP CLASSICS® PREMIUM SNAPBACK CAP Jr.

Classic shape. Premium wool blend. Matching plastic snap. Hard buckram. Classic green undervisor.

<b>CONTENTS</b> 80% Acrylic / 20% Wool	<b>PROFILE</b> High	<b>PANELS</b> 6
<b>SIZE</b> OSFA(6 3/8" - 6 7/8")	<b>VISOR</b> Flat	<b>CROWN</b> 3 1/3"



SNAPBACK

6089CM-Jr.

## YP CLASSICS® PREMIUM SNAPBACK CAP Jr.

Premium snapback in high quality Woodland Camo pattern. 6-panel structured cap with green undervisor. Black plastic snapback closure with 8 rows of stitching on visor. Esteemed since 1974.

<b>CONTENTS</b> 65% Acrylic / 35% Wool	<b>PROFILE</b> High	<b>PANELS</b> 6
<b>SIZE</b> OSFA(6 3/8" - 6 7/8")	<b>VISOR</b> Flat	<b>CROWN</b> 3 1/3"



SNAPBACK

6089MT-Jr.

## YP CLASSICS® PREMIUM SNAPBACK CAP Jr.

Premium wool-blended snapback for luxurious look. 6-panel structured cap with classic green undervisor. Contrasting plastic snapback closure, eyelets and top button with 8 rows of stitching on visor. Comes in 2-Tone. Esteemed since 1974.

<b>CONTENTS</b> 80% Acrylic / 20% Wool	<b>PROFILE</b> High	<b>PANELS</b> 6
<b>SIZE</b> OSFA(6 3/8" - 6 7/8")	<b>VISOR</b> Flat	<b>CROWN</b> 3 1/3"



BLACK/CAMO



SNAPBACK

6089TC-Jr.

## YP CLASSICS® PREMIUM SNAPBACK CAMO - 2-TONE Jr.

Premium wool-blended snapback in Woodland Camo pattern. 6-panel structured cap with black undervisor. Black plastic snap with 8 rows of stitching on visor. Comes in 2-Tone Camo color. Esteemed since 1974.

**CONTENTS**

64% Acrylic / 16% Wool / 13% Polyester / 7% Cotton

**SIZE**

OSFA(6 3/8" - 6 7/8")

**PROFILE**

High

**PANELS**

6

**VISOR**

Flat

**CROWN**

3 1/3"



BLACK

RED



KHAKI

NAVY



OLIVE

TIGERCAMO



PLASTIC HOOK

7005-Jr.

## YP CLASSICS® JOCKEY CAP Jr.

Classic camper shape. Unstructured, 5-panel cap with matching undervisor. Black clip closure with 8-row stitching on visor and 4 black metal eyelets. Esteemed since 1974.

**CONTENTS**

100% Cotton

**SIZE**

OSFA(6 3/8" - 6 7/8")

**PROFILE**

Low

**PANELS**

5

**VISOR**

Flat

**CROWN**

2 1/2"



BLACK

WHITE



NAVY

KHAKI



PINK

LIGHT BLUE



ANTIQUe BRASS BUCKLE

6245CM-jr.

## YP CLASSICS® CLASSIC DAD CAP Jr.

Trendy low-profile dad cap style. 6-panel unstructured cap with matching undervisor. Classic antique brass buckle closure for style and comfort. 4 rows of stitching on visor. Esteemed since 1974.

**CONTENTS**

100% Cotton

**SIZE**

OSFA(6 3/8" - 6 7/8")

**PROFILE**

Low

**PANELS**

6

**VISOR**

Permacurv

**CROWN**

3 1/7"

# MULTICAM®



SNAPBACK



MULTICAM®



MULTICAM®  
BLACK

6606MC

## YP CLASSICS® MULTICAM® RETRO TRUCKER MESH CAP

Classic trucker look with officially-licensed MultiCam® pattern. 5-panel structured cap with black undervisor (Alpine has white undervisor). Matching plastic snapback with 8 rows of stitching on visor. Esteemed since 1974.

**CONTENTS**  
60% Polyester / 39% Cotton /  
1% PU Spandex

**SIZE**  
OSFA

**PROFILE**  
Mid

**VISOR**  
Permacurv

**PANELS**  
6

**CROWN**  
3 1/2"



MULTICAM®

MULTICAM®  
BLACK



SNAPBACK

6006MC

## YP CLASSICS® MULTICAM® TRUCKER MESH CAP

Classic trucker look with officially-licensed MultiCam® pattern. 5-panel structured cap with black undervisor (Alpine has white undervisor). Matching plastic snapback with 8 rows of stitching on visor. Esteemed since 1974.

**CONTENTS**  
60% Polyester / 39% Cotton /  
1% PU Spandex

**PROFILE**  
High

**PANELS**  
5

**SIZE**  
OSFA

**VISOR**  
Flat

**CROWN**  
4"



MULTICAM®

MULTICAM®  
BLACK



SNAPBACK

6089MC

## YP CLASSICS® MULTICAM® SNAPBACK CAP

Premium snapback in officially-licensed MultiCam® pattern. 6-panel structured cap with black undervisor and black plastic snap (Alpine has white undervisor and white snap). With 8 rows of stitching on visor. Esteemed since 1974. snapback in officially-licensed MultiCam® pattern. 6-panel structured cap with black undervisor (Alpine has white undervisor). Black plastic snap (Alpine has white snap) with 8 rows of stitching on visor. Esteemed since 1974.

**CONTENTS**  
98% Cotton / 2% PU Spandex

**PROFILE**  
High

**PANELS**  
6

**SIZE**  
OSFA

**VISOR**  
Flat

**CROWN**  
3 3/4"



MULTICAM®

MULTICAM®  
BLACK



ANTIQU BRASS  
BACKLE

6245MC

## YP CLASSICS® MULTICAM® COTTON TWILL CAP

Trendy low-profile dad cap style in officially licensed MultiCam® pattern. 6-panel unstructured cap with black undervisor (Alpine has white undervisor). Classic antique brass buckle closure for style and comfort. 4 rows of stitching on visor. Esteemed since 1974.

**CONTENTS**  
98% Cotton / 2% PU Spandex

**PROFILE**  
High

**PANELS**  
6

**SIZE**  
OSFA

**VISOR**  
Permacurv

**CROWN**  
3 1/8"

# MADE FOR: GENERATIONS



6606R



---

## TECH OVERVIEW



---

A collection that represents our commitment towards a better tomorrow. The next generation of headwear. Crafted using recycled fabrics and mesh derived from recycled plastic bottles, this collection transforms waste into sustainable wear. While maintaining our renowned quality and features, we've taken a step further to enhance our products for a more promising tomorrow.





6606R-JPLT



## YP CLASSICS® RECYCLED RETRO TRUCKER CAP

The YP Classics® Recycled Retro Trucker cap maintains the same quality and trait as its regular counterpart while providing our planet a greener solution. Made from recycled plastic bottles, the cap attempts to reduce unperishable plastic waste. This cap is part of our Rescued and Renewed collection, our solution to lessen the ecologic footprint on our planet.

- Retro trucker cap made with recycled fabric
- Hard buckram. Structured
- Antique brass buckle closure
- Matching undervisor, 4-row stitching on visor



**CONTENTS**  
100% Recycled Cotton

**PROFILE**  
Mid

**PANELS**  
6

**SIZE**  
OSFA

**VISOR**  
Permacurv

**CROWN**  
3 1/2"



SNAPBACK



6089MR-JPLT



## YP CLASSICS® RECYCLED CLASSIC SNAPBACK CAP

The YP Classics® Recycled Classic snapback cap maintains the same quality and trait as its regular counterpart while providing our planet a greener solution. Made from recycled plastic bottles, the cap attempts to reduce unperishable plastic waste. This cap is part of our Rescued and Renewed collection, our solution to lessen the ecologic footprint on our planet.

- Classic snapback cap made with recycled fabric
- Hard buckram. Structured
- Matching plastic snapback closure
- Classic green undervisor, 8-row stitching on visor



**CONTENTS**  
100% Recycled Cotton

**PROFILE**  
Mid

**PANELS**  
6

**SIZE**  
OSFA

**VISOR**  
Flat

**CROWN**  
3 3/4"



SNAPBACK



6245CMR-JPLT



## YP CLASSICS® RECYCLED TRENDY DAD CAP

The YP Classics® Recycled Classic snapback cap maintains the same quality and trait as its regular counterpart while providing our planet a greener solution. Made from recycled plastic bottles, the cap attempts to reduce unperishable plastic waste. This cap is part of our Rescued and Renewed collection, our solution to lessen the ecologic footprint on our planet.

- Trendy dad cap with recycled fabric
- Unstructured
- Matching plastic snapback closure
- Matching undervisor, 8-row stitching on visor



**CONTENTS**  
100% Recycled Cotton

**PROFILE**  
Low

**PANELS**  
6

**SIZE**  
OSFA

**VISOR**  
Permacurv

**CROWN**  
3 1/8"



ANTIQUE BRASS BACKLE

# HAT COMPONENTS



## VISOR

A fabric-covered round piece attached to the front of the cap.

Made to help shield the eyes from the sun, visors come in a wide range of shapes and curvatures to cater to a variety of headwear styles.



## CROWN

The distance from the bottom edge of the cap to the top of the head.

This helps determine the depth of the cap. A smaller number means the cap will sit higher on the head while a larger number means the cap will sit lower.



## PANELS

Triangular pieces of fabric that are stitched together.

These pieces come together to form the main rounded structure of the cap. Depending on the style, caps generally consist of 5 or 6 panels.



## CLOSURE

The back piece of the cap that determines fit and adjustability.

There is a wide range of closure types such as snapbacks, buckles, and plastic hooks made to give our customers the perfect fit.



## PROFILE

The slope of the cap's crown.

Low-profile caps tend to have crowns that are more angled while high profile caps have crowns that are more perpendicular to the visor.

# HAT SIZING

## HEAD SIZE

INCHES	20	20 3/8	20 3/4	21 1/4	21 5/8	22	22 3/8	22 3/4	23 1/8	23 1/2	23 7/8	24 1/4	24 5/8	25
CM	51	52	53	54	55	56	57	58	59	60	61	62	63	64
SIZES	6 3/8	6 1/2	6 5/8	6 3/4	6 7/8	7	7 1/8	7 1/4	7 3/8	7 1/2	7 5/8	7 3/4	7 7/8	8

## FLEXFIT NU®

S/M	6 3/8	6 1/2	6 5/8	6 3/4	6 7/8	7	7 1/8	7 1/4	7 3/8	7 1/2	7 5/8	7 3/4	7 7/8	8
L/XL	6 3/8	6 1/2	6 5/8	6 3/4	6 7/8	7	7 1/8	7 1/4	7 3/8	7 1/2	7 5/8	7 3/4	7 7/8	8

## FLEXFIT DELTA®

S/M	6 3/8	6 1/2	6 5/8	6 3/4	6 7/8	7	7 1/8	7 1/4	7 3/8	7 1/2	7 5/8	7 3/4	7 7/8	8
L/XL	6 3/8	6 1/2	6 5/8	6 3/4	6 7/8	7	7 1/8	7 1/4	7 3/8	7 1/2	7 5/8	7 3/4	7 7/8	8

## FLEXFIT

OSFA	6 3/8	6 1/2	6 5/8	6 3/4	6 7/8	7	7 1/8	7 1/4	7 3/8	7 1/2	7 5/8	7 3/4	7 7/8	8
YOUTH	6 3/8	6 1/2	6 5/8	6 3/4	6 7/8	7	7 1/8	7 1/4	7 3/8	7 1/2	7 5/8	7 3/4	7 7/8	8
S/M	6 3/8	6 1/2	6 5/8	6 3/4	6 7/8	7	7 1/8	7 1/4	7 3/8	7 1/2	7 5/8	7 3/4	7 7/8	8
L/XL	6 3/8	6 1/2	6 5/8	6 3/4	6 7/8	7	7 1/8	7 1/4	7 3/8	7 1/2	7 5/8	7 3/4	7 7/8	8
XXL	6 3/8	6 1/2	6 5/8	6 3/4	6 7/8	7	7 1/8	7 1/4	7 3/8	7 1/2	7 5/8	7 3/4	7 7/8	8

## FLEXFIT 110®

OSFA	6 3/8	6 1/2	6 5/8	6 3/4	6 7/8	7	7 1/8	7 1/4	7 3/8	7 1/2	7 5/8	7 3/4	7 7/8	8
------	-------	-------	-------	-------	-------	---	-------	-------	-------	-------	-------	-------	-------	---

## FLEXFIT 210®

S/M	6 3/8	6 1/2	6 5/8	6 3/4	6 7/8	7	7 1/8	7 1/4	7 3/8	7 1/2	7 5/8	7 3/4	7 7/8	8
L/XL	6 3/8	6 1/2	6 5/8	6 3/4	6 7/8	7	7 1/8	7 1/4	7 3/8	7 1/2	7 5/8	7 3/4	7 7/8	8

## YP CLASSICS®

OSFA	6 3/8	6 1/2	6 5/8	6 3/4	6 7/8	7	7 1/8	7 1/4	7 3/8	7 1/2	7 5/8	7 3/4	7 7/8	8
------	-------	-------	-------	-------	-------	---	-------	-------	-------	-------	-------	-------	-------	---

\*This chart is for general use only. Please refer to each style for most accurate sizing info.

**YUPOONG**



**FLEXFIT®**

株式会社 FF JAPAN

〒220-0073

神奈川県横浜市西区岡野 1-1-22

Tel & Fax 045-515-5392

info@flexfit.jp